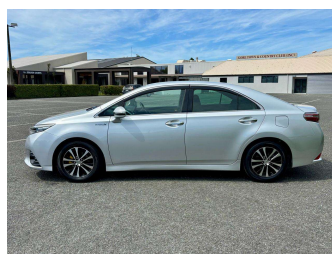
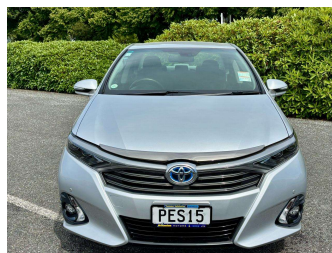


2013 Toyota Sai 2.4 HYBRID POWER 5 L PER 100K



Purchase Price **\$14,999**
Includes GST, Registration & Licensing

Finance may be available on this vehicle. Ask one of our friendly staff for more information.



Gain peace of mind with Mechanical Breakdown Insurance. **Ask us how.**



Top features

- » 2 Wheel Drive
- » ABS Braking
- » Air Bag(s)
- » Air Conditioning
- » CD Player
- » Central Locking
- » Climate Control
- » Cruise Control
- » Electric Seat(s)
- » Monsoons
- » NZ new
- » Push start/stop
- » Push Start/Stop
- » Reversing Camera
- » Steering Wheel Control...
- » Traction Control

Body Style
4 door, Sedan 4 door

Odometer
88,996 km

Engine
2400 cc

Fuel Type
Hybrid/Petrol

Transmission
Automatic

Wheels
-

VIN
7AT0H661X22062896

Interior
Black

Safety



Based on 2023 VSRR rating

Reg No.
PES15

Ext Colour
Silver

History
-

Seats
5 seats

CO2 Emissions
★★★★☆
126 grams/km

Energy Economy
★★★★☆☆

Annual fuel cost of \$2,120
5.4L per 100km

Cost per year is an estimate based on petrol price of \$2.80 per litre and an average distance of 14000 km. Emissions and Energy Economy figures standardised to 3P WLTP.



Scan this QR code for more info
Stock ID: 12949